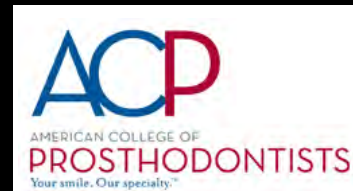


ZYGOMATIC & PTERYOMAXILLARY IMPLANTS GUIDED & UNGUIDED

American College of Prosthodontists
44th Annual Scientific Session
Baltimore, MD -- November 2, 2012

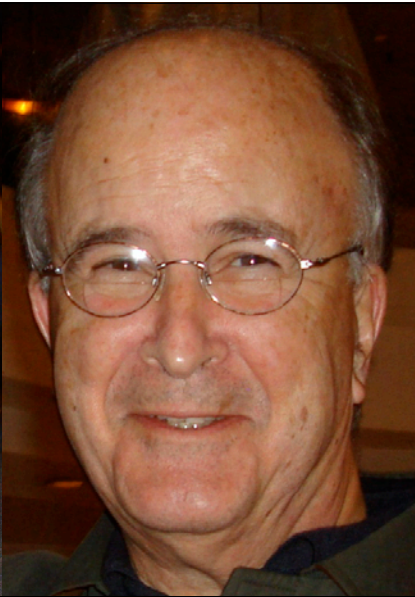
Thomas J. Balshi, D.D.S., Ph.D., F.A.C.P.,

Institute for Facial Esthetics
Fort Washington, PA, USA

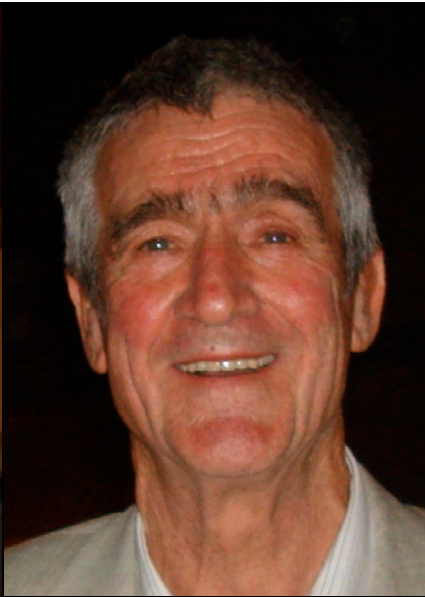




Prof. Per-Ingvar Brånemark



Prof. George Zarb



Prof. Patrick Henry



Prof. Chantal Malevez



Prof. Daniel van Steenberghe



Zygomatic & Pterygomaxillary Implants

Points to Share with Fellow Prosthodontists

- Define zygomatic and pterygomaxillary implants?
- Do they work? *Evidence-based prosthodontics*
- Why use these locations for implants?
- Examples - *4 Patients*

Prosthetically-Driven Treatment



“**RETREATMENT** is challenging in scope and technology for both patient and the **DENTIST.**”

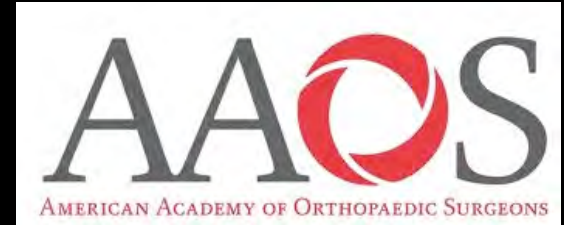
Dr. JP Wiens, ACP MESSSENGER Fall 2012



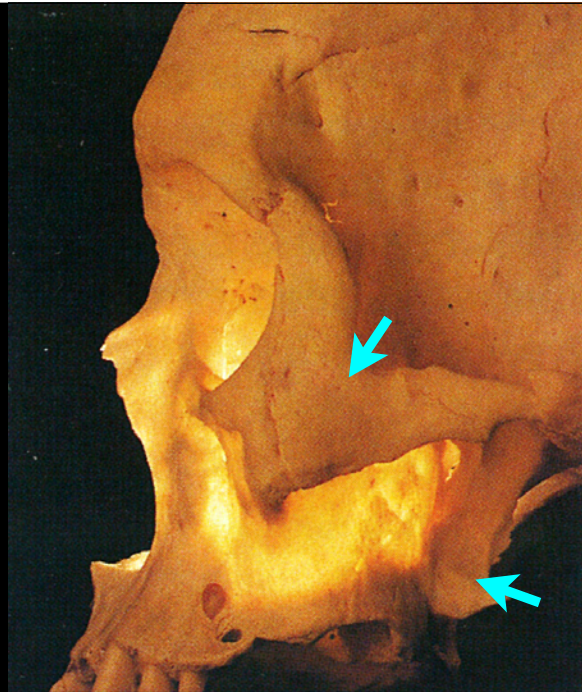
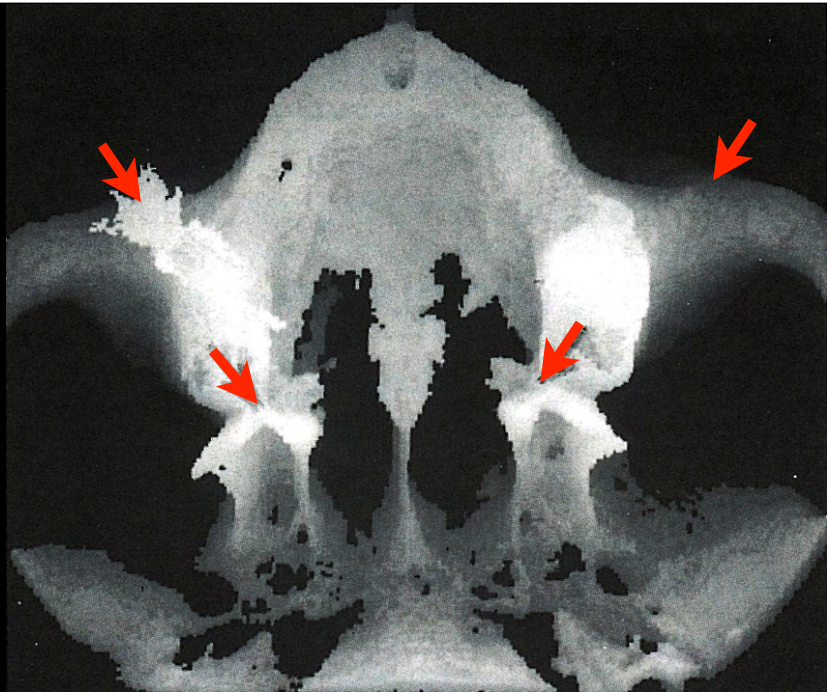
“**REVISION** is challenging in scope and technology for both patient and the **PROSTHODONTIST.**”



“Revision surgery is a complex procedure that requires extensive preoperative planning, specialized implants and tools, and mastery of difficult surgical techniques to achieve a good result.”

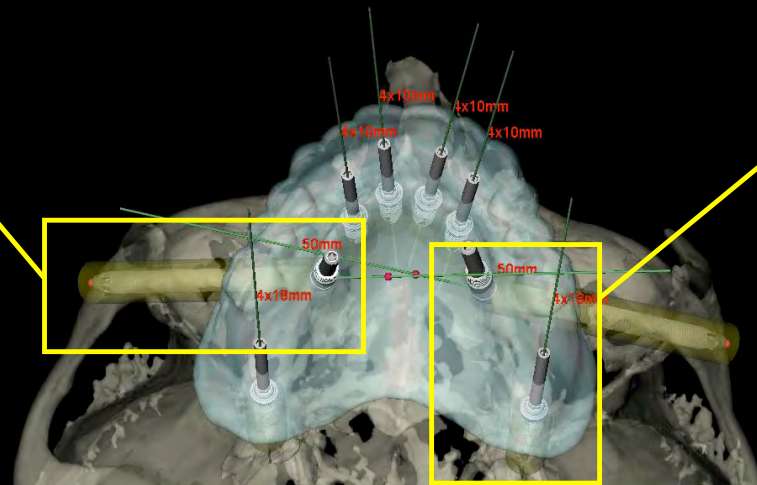
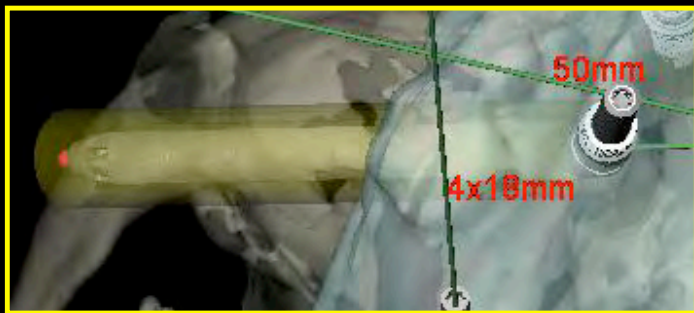


“**REVISION** is challenging in scope and technology for both patient and the **PROSTHODONTIST.**”



Zygomatic & Pterygomaxillary Implants

not only special implants - also special places



Pterygomaxillary Implants

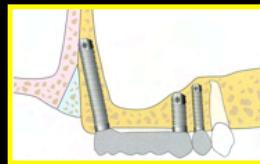
● Literature Terminology

1. Pterygoid implant
2. Pterygomaxillary implant
3. Tuberosity implant

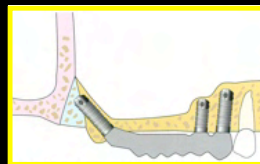
● Tuberosity \neq Pterygomaxillary

- | | |
|---------------------|----------------------------------|
| 1. Location | 5. Visualization |
| 2. Bone Quality | 6. Implant Length |
| 3. Vital Structures | 7. Technique Sensitive with Risk |
| 4. Implant Angle | |

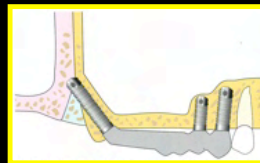
● Tuberosity



● Pyramidal Process of the Palantine



● Pterygoid Process of the Sphenoid



The real anatomic definition:

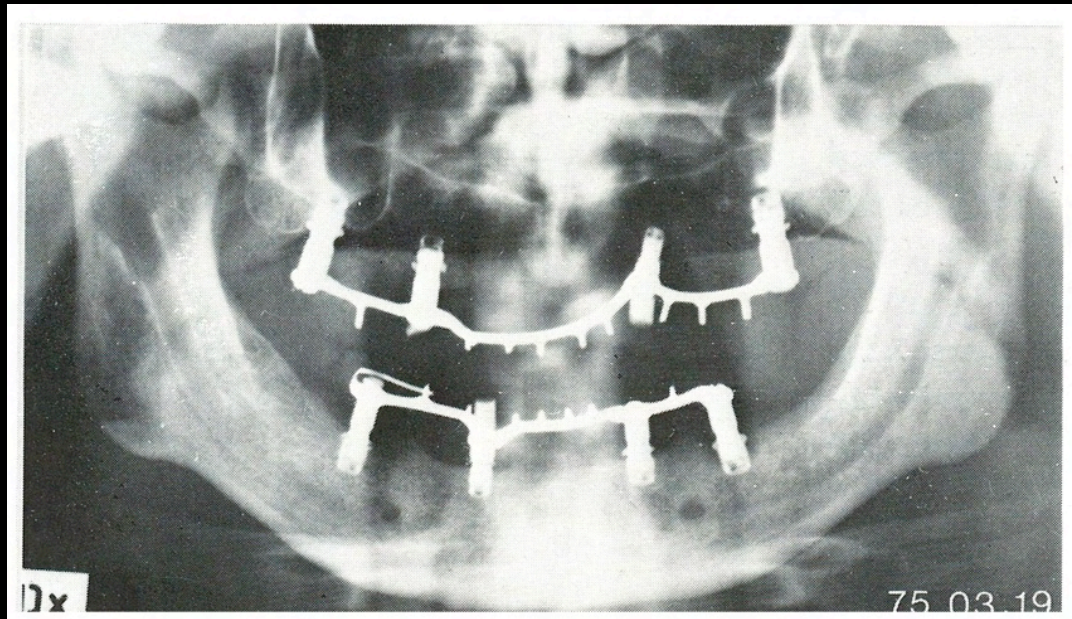
THROUGH THE TUBEROSITY & INTO THE PTERYGOID PLATES



Courtesy:
Reiser GM



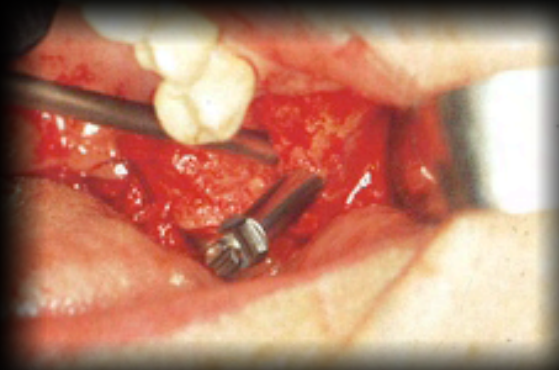
Brånemark
used the
Tuberosity
as early as
1975



Pterygomaxillary Implants



Jean-Francois Tulasne placed the first implant at the suggestion of Paul Tessier (**1985**)



Tulasne JF. Implant treatment of missing posterior dentition. In: Albrektsson T, Zarb GA (eds). The Brånemark Osseointegrated Implant. Chicago. **Quintessence.** **1989**:103-115.

Pterygomaxillary Implants

- The maxillary tuberosity is often well developed but is made of bone that is too *spongy* to provide predictable osseointegration
- The *tuberosity rests against* an extremely dense mass of bone formed by the *pterygoid process* and the vertical point of the *palatine bone*



Tulasne JF. Implant treatment of missing posterior dentition. In: Albrektsson T, Zarb GA (eds). The Brånemark Osseointegrated Implant. Chicago. **Quintessence.** 1989:103-115.

Pterygomaxillary Implants

- September 1985 to December 1993
 - 44 patients
 - 51 machine-surface Brånemark System implants
 - Traditional 2-stage protocol
 - All partially edentulous
 - 7 implant failures
 - 86.5% CSR



Balshi TJ, Lee HY, Hernandez RE. The use of pterygomaxillary implants in the partially edentulous patient: a preliminary report. *Int J Oral Maxillofac Implants* 1995;10:89-98.

Pterygomaxillary Implants

- September 1985 to April 1998

- 189 fully edentulous patients
- 356 machine-surface Brånemark System implants
- Traditional 2-stage protocol
- 42 implant failures
- 88.2% CSR

TIME of STUDY	CSR
1985-1993	86.5%
1985-1998	88.2%



Balshi TJ, Wolfinger GJ, Balshi II SF. Analysis of 356 pterygomaxillary implants in edentulous arches for fixed prosthesis anchorage. *Int J Oral Maxillofac Implants* 1999;14:398-406.

Pterygomaxillary Implants

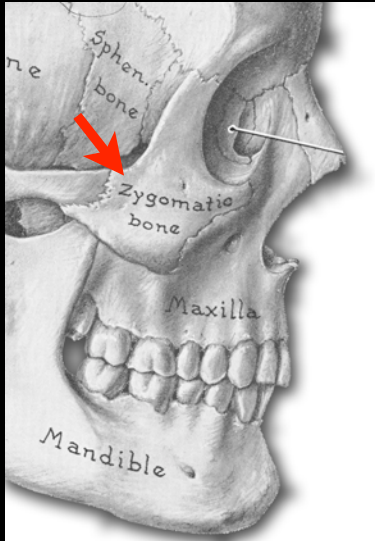
- December 1999 to March 2004
 - 82 fully edentulous arches
 - 164 TiUnite surface
 - 80 were immediately loaded; 84 traditional 2-stage protocol
 - 6 implant failures: 3 immediately loaded, 3 submerged
 - 96.3% CSR 96.3% immediately loaded, 96.4% submerged

TIME of STUDY	CSR
1985-1993	86.5%
1985-1998	88.2%
1999-2004	96.3%



Balshi SF, Wolfinger GJ, Balshi TJ. Analysis of 164 titanium oxide-surface implants in completely edentulous arches for fixed prosthesis support using the pterygomaxillary region. *Int J Oral Maxillofac Implants* 2005;20:946-952.

Zygoma Implants



- Osseointegration in the zygoma reported by **Brånemark** in **1988**
- Implant introduced in **1997**
- Current implant features
 - Self-tapping TiUnite Surface
 - Brånemark external hex
 - 2 diameters on the same implant: 3.9 and 4.6 mm
 - Variable lengths: 30, 35, 40, 42.5, 45, 47.5, 50, 52.5 mm
 - 45° turn at the coronal end



Zygoma Implants

- an implant into the sinus will not jeopardize sinus health
- an alternative to bone grafting or sinus lift procedures
- reduced treatment TIME with immediate LOADING
- Screw-retained prosthesis

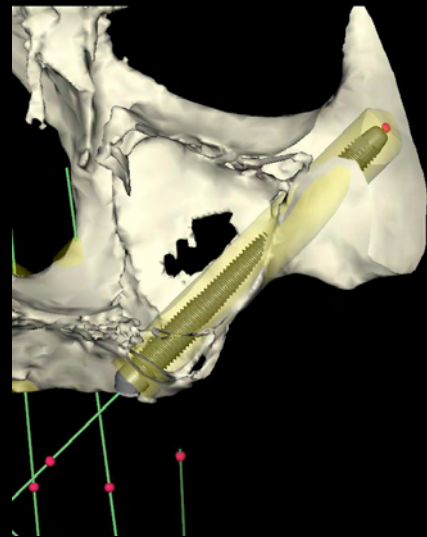
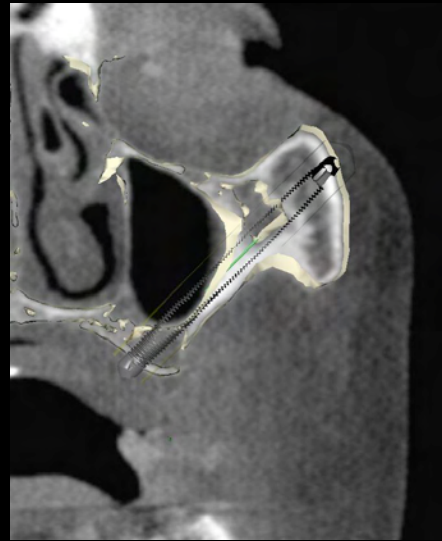


Malavez C, Daelemans P, Adriaenssens P, Durdu F. Use of zygomatic implants to deal with resorbed posterior maxillae. *Periodontology 2000* 2003;33:82-89.



Zygoma Implants

- Dual anchorage in the maxilla and the zygoma



Zygoma Implants

How much bone is actually in contact with the zygomatic implant in the zygoma?

In a retrospective study on 173 implants in 77 patients, it was shown that the mean height was **15.32 mm**.

Mean: **15.3 mm**

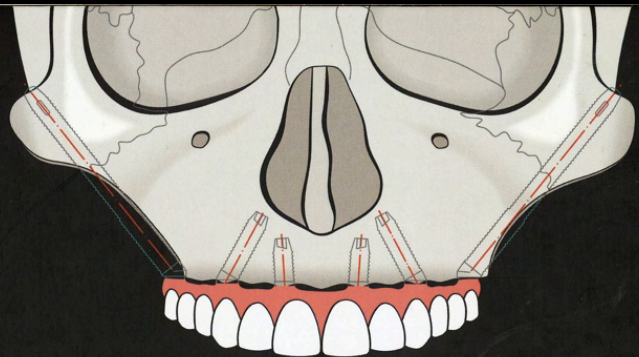
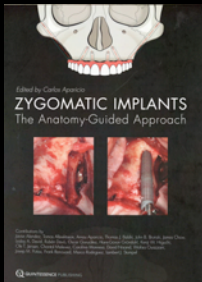
Max: **32.9 mm**

Min: **4.9 mm**

On average, **35.91%** of the zygoma implant was in contact with the zygoma bone.



Balshi TJ, Wolfinger GJ, Shuscavage NJ, Balshi SF. Zygoma bone-to-implant contact in 77 patients with partially or completely edentulous maxillas. *J Oral Maxillofac Surg* 2012; 70(9):2065-2069.

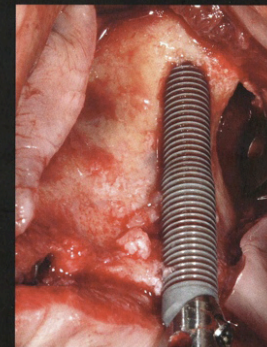
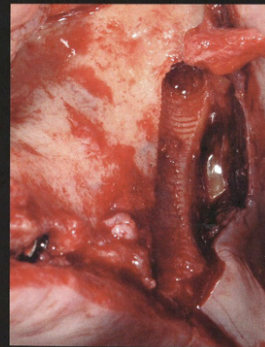


Quintessence
2012


Edited by Carlos Aparicio

ZYGOMATIC IMPLANTS

The Anatomy-Guided Approach



Contributions by
Javier Alandez, Tomas Albrektsson, Arnau Aparicio, Thomas J. Balshi, John B. Brunski, James Chow,
Lesley A. David, Rubén Davó, Oscar González, Hans-Göran Gröndahl, Kenji W. Higuchi,
Ole T. Jensen, Chantal Malevez, Carolina Manresa, David Nisand, Wafaa Ouazzani,
Josep M. Potau, Frank Renouard, Marco Rodriguez, Lambert J. Stumpel

 QUINTESSENCE PUBLISHING

Zygoma Implants

- May 2000 to December October 2006 - **TIAD**
 - 56 patients (27 men, 29 women)
 - All implants followed the Teeth in a Day™ I-stage protocol
 - 110 Zygoma implants (76 machine surface; 34 TiUnite surface)
 - 14 unilateral Zygo treatment; 42 bilateral Zygo treatment
 - All patients were fully edentulous
 - 4 implant failures (96.37% CSR)



Balshi SF, Wolfinger GJ, Balshi TJ. A retrospective analysis of 110 zygomatic implants in a single-stage immediate loading protocol. *Int J Oral Maxillofac Implants* 2009;24:335-341.

Zygoma Implants

- Publications on immediate loading with zygoma implants

STUDY	# PATIENTS	# IMPLANTS	CUMULATIVE SURVIVAL RATE	LOADING PROTOCOL
Balshi et al, 2009	56	110	100%	Immediate
Bedrossian et al, 2006	14	28	100%	Immediate
Chow et al, 2006	5	10	100%	Immediate
Duarte et al, 2007	12	48	100%	6 hours
Davó et al, 2007	18	36	100%	48 hours
Aparicio et al, 2008	20	36	100%	24 hours
Maló et al, 2008	29	67	98.5%	24 hours
Bedrossian et al, 2011	36	74	97.3%	Immediate
Chow et al, 2011	16	37	100%	1 to 8 days

Zygoma Implants

the  experience

Life Table Analysis for delayed loading

PERIOD	# IMPLANTS	# FAILURES	SURVIVAL RATES	CUMULATIVE SURVIVAL RATE
0-3 months	55	0	100%	100%
3-6 months	55	2	96.4%	96.4%
6-9 months	53	1	98.1%	94.5%
1 year	52	3	94.2%	89.1%
7 years	49	0	100%	89.1%
8 years	49	0	100%	89.1%
9 years	49	0	100%	89.1%
10+ years	49	0	100%	89.1%

Zygoma Implants

the  experience

Life Table Analysis for immediate loading

PERIOD	# IMPLANTS	# FAILURES	SURVIVAL RATES	CUMULATIVE SURVIVAL RATE
0-3 months	293	3	98.9%	98.9%
3-6 months	284	1	99.7%	98.6%
6-9 months	277	0	100%	98.6%
9-12 months	272	1	99.6%	98.3%
1 year	257	1	99.6%	98.0%
2 years	237	0	100%	98.0%
3 years	174	0	100%	98.0%
4 years	118	0	100%	98.0%
5 years	77	0	100%	98.0%
6 years	41	0	100%	98.0%
7 years	29	0	100%	98.0%
8 years	6	0	100%	98.0%
9 years	4	0	100%	98.0%
10 years +	3	0	100%	98.0%

Zygomatic & Pterygomaxillary Implants

Why use these locations for implants?

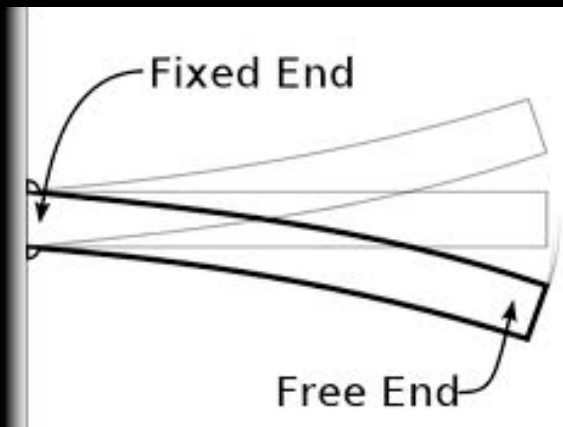
~~BONE
GRAFTING~~



Zygomatic & Pterygomaxillary Implants

Why use these locations for implants?

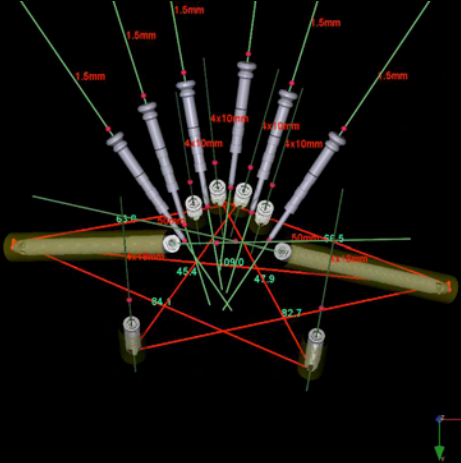
CANTILEVERS



Zygomatic & Pterygomaxillary Implants

Why use these locations for implants?

**OPTIMAL
BIOMECHANICS**

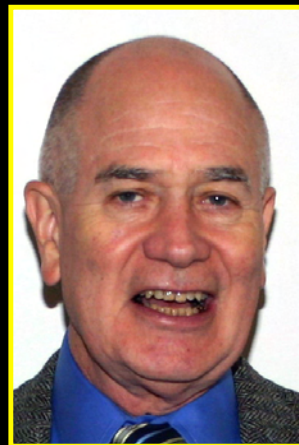


Neeraja K.



- Guided pterygomaxillary implants
- Partially-guided zygomatic implants

Dr. John Agar



Dr. Avi Bidra



Dr. Guillermo Zapata
3 PGP

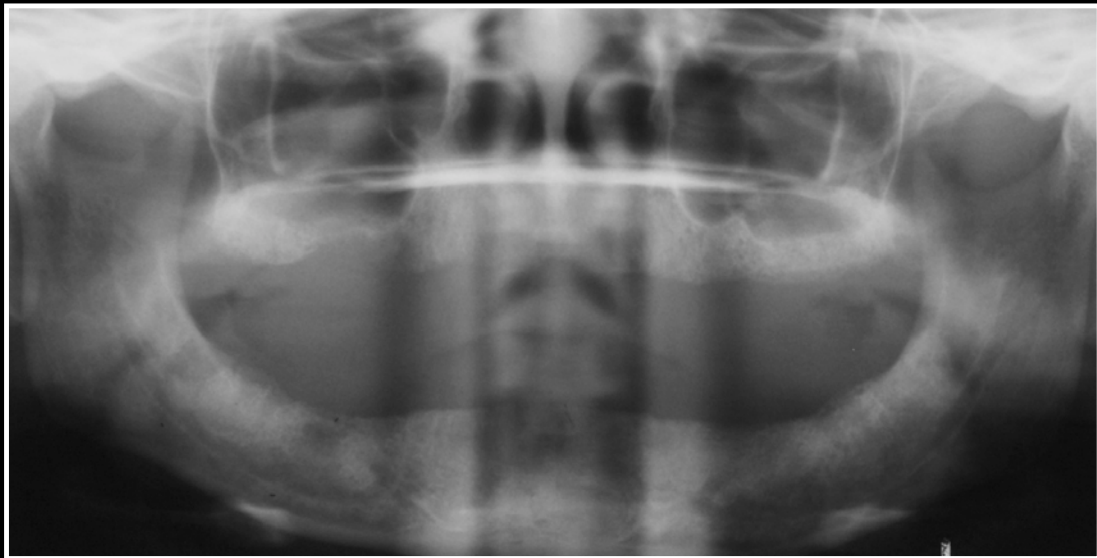


Neeraja K.



Neeraja K.





Implant 7

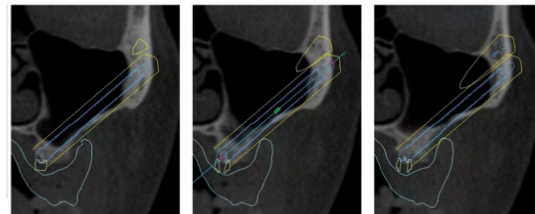
General Information

Manufacturer: NobelBiocare
 Product Name: Brånemark System Zygoma TiUnite
 Platform: RP
 Size: ø 4.0 x 42.5 mm
 REF: 34736

Abutment: Brånemark System Zygoma Multi-unit
 Abutment 3 mm
 Height: 3 mm
 REF: 32330

Planning Warnings

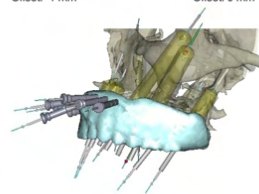
No warnings



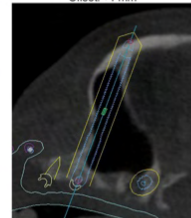
Offset: -1 mm

Offset: 0 mm

Offset: +1 mm



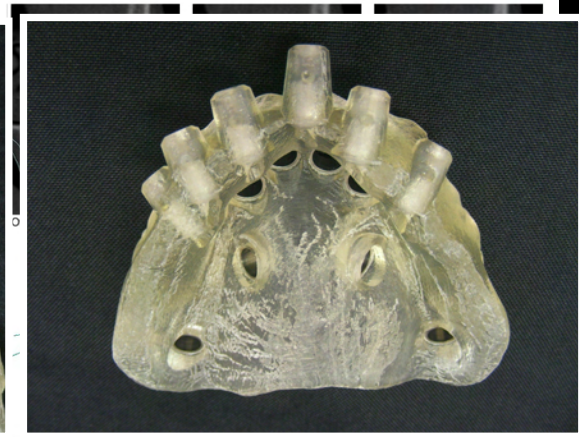
3D Overview



Parallel view

This document is derived from a patient case created in the NobelClinician software and based on information entered by a user of said software. The user of the NobelClinician software is solely responsible for the patient case, and the correctness, completeness and adequacy of all information entered. This document does not constitute advice by Nobel Biocare in any specific or general case and does not replace the diagnosis of an appropriately qualified dental specialist. Nobel Biocare and its affiliates therefore explicitly exclude any liability for direct, consequential, incidental, indirect, punitive or other damages, resulting from or in connection with this document, or any errors or incompleteness in the information entered into the NobelClinician software.

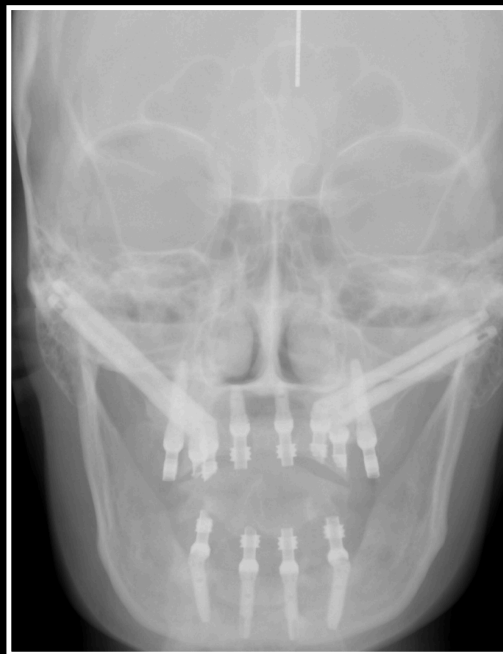
Implant 7



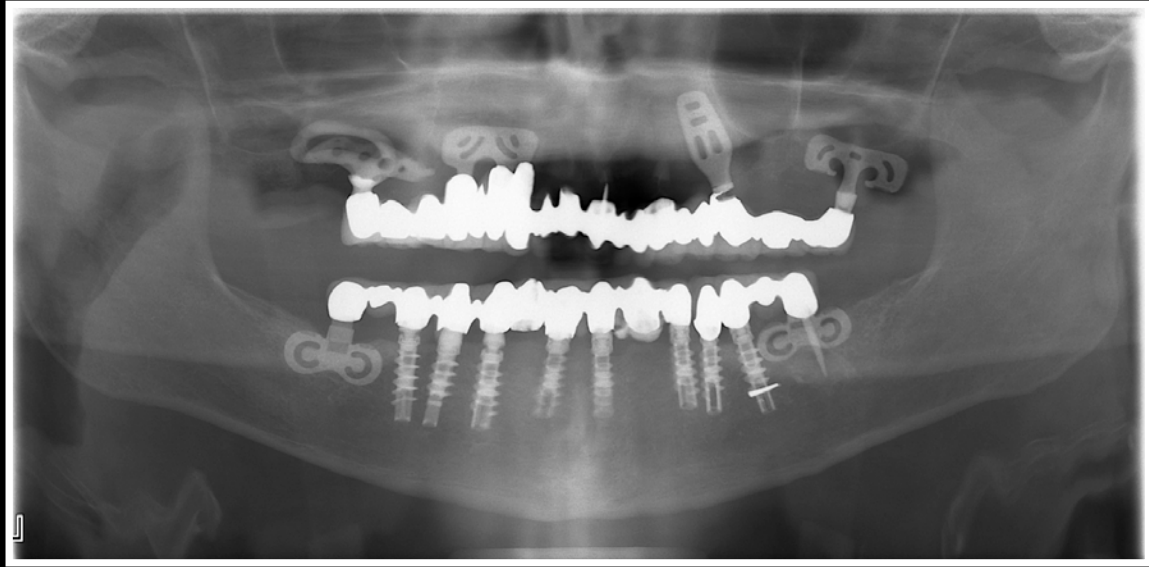
3D Overview

Parallel view

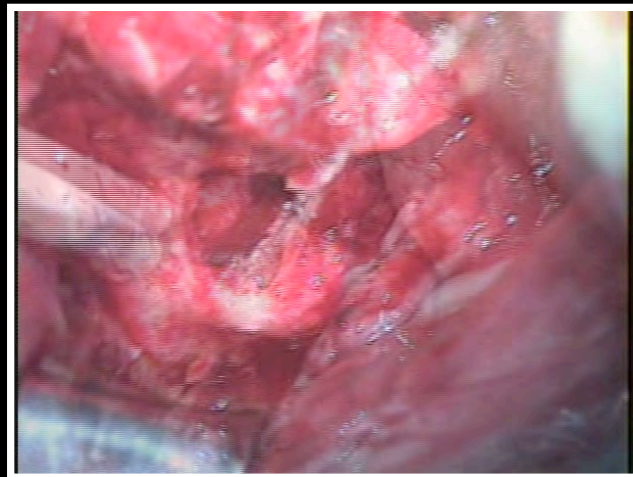
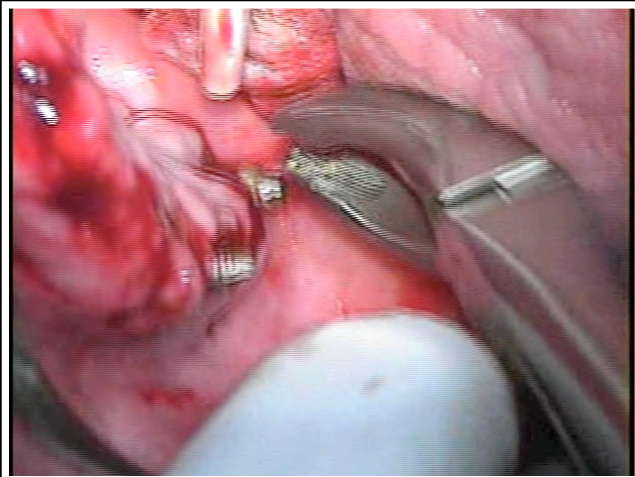
This document is derived from a patient case created in the NobelClinician software and based on information entered by a user of said software. The user of the NobelClinician software is solely responsible for the patient case, and the correctness, completeness and adequacy of all information entered. This document does not constitute advice by Nobel Biocare in any specific or general case and does not replace the diagnosis of an appropriately qualified dental specialist. Nobel Biocare and its affiliates therefore explicitly exclude any liability for direct, consequential, incidental, indirect, punitive or other damages, resulting from or in connection with this document, or any errors or incompleteness in the information entered into the NobelClinician software.



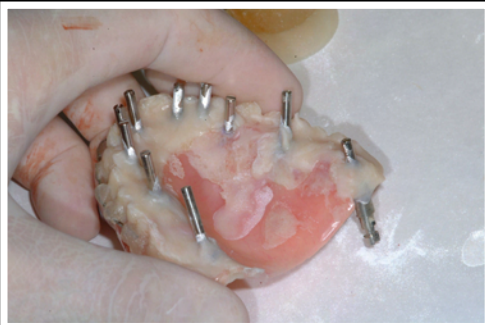
Jason K.



Teeth in a Day™ with Zygomatic Implants



Teeth in a Day™ with Zygomatic Implants



Prosthesis Stability is Dependent on Implant Position

Teeth in a Day™ with Zygomatic Implants

18 hours Post-Surgery

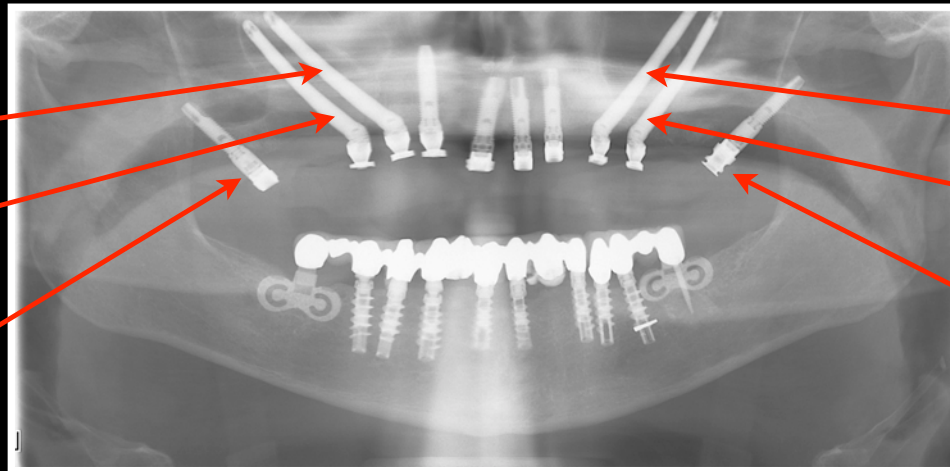
Zygomatic Implant Length

50mm

45mm

Pterygoid Implant Length

18mm



Zygomatic Implant Length

52.5mm

47.5mm

Pterygoid Implant Length

18mm

Teeth in a Day™ with Zygomatic Implants

Final Prosthesis Construction



CM Prosthesis

Teeth in a Day™ with Zygomatic Implants

Final Prosthesis Construction



CM Prosthesis

Teeth in a Day™ with Zygomatic Implants

Final Prosthesis Construction

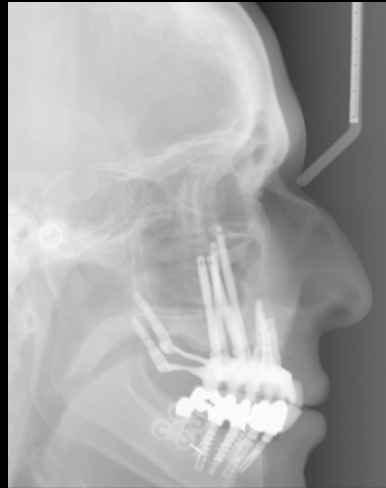
CM Prosthesis
with Quad Zygo



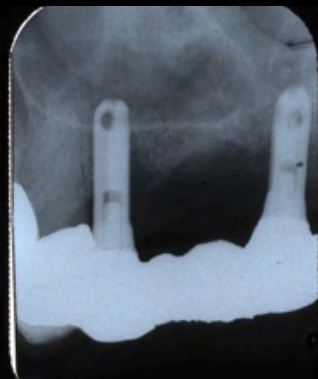
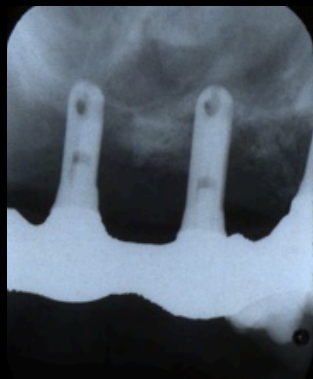
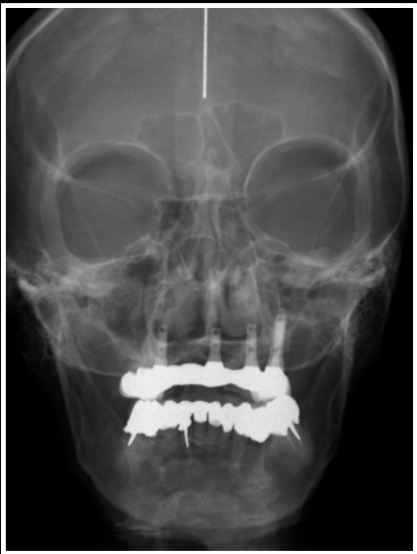
Teeth in a Day™ with Zygomatic Implants

Final Prosthesis Construction

CM Prosthesis
with Quad Zygo
and Bi-Lateral Pterygoids



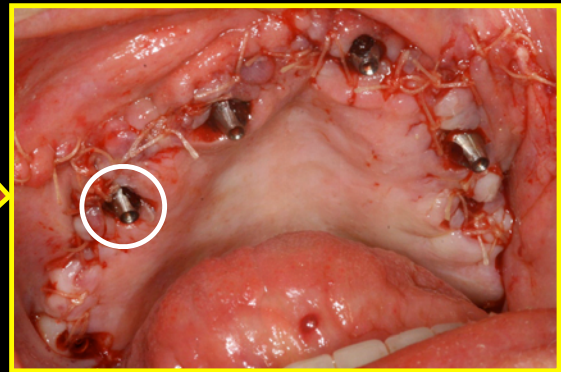
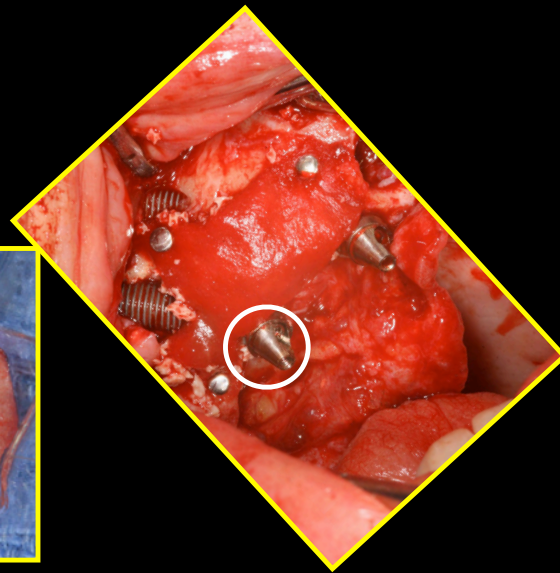
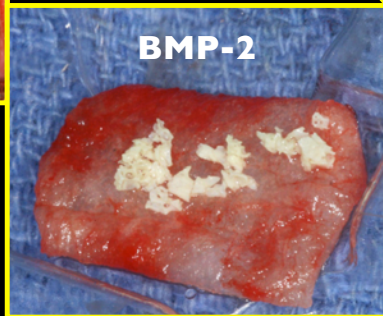
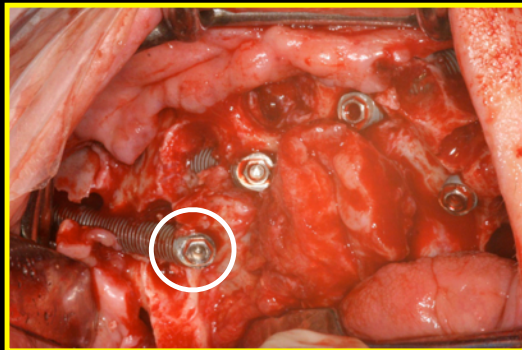
Helen M.





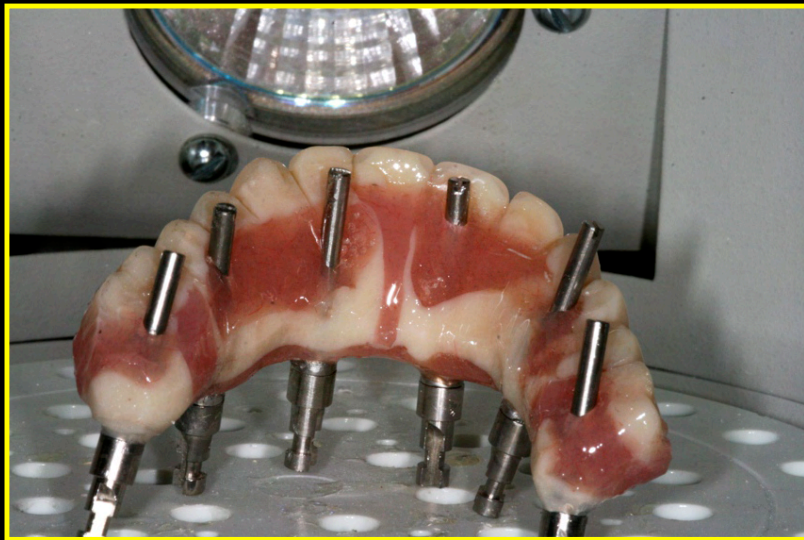
REVISION TREATMENT USING ONLY ZYGOMATIC & PTERYGOMAXILLARY IMPLANTS

4Z & 2P NBS



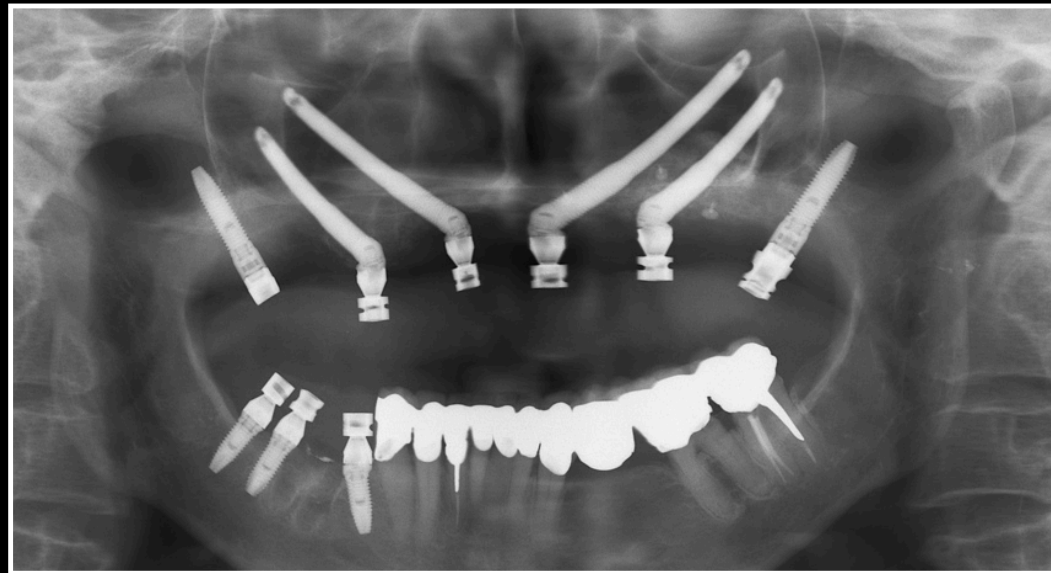
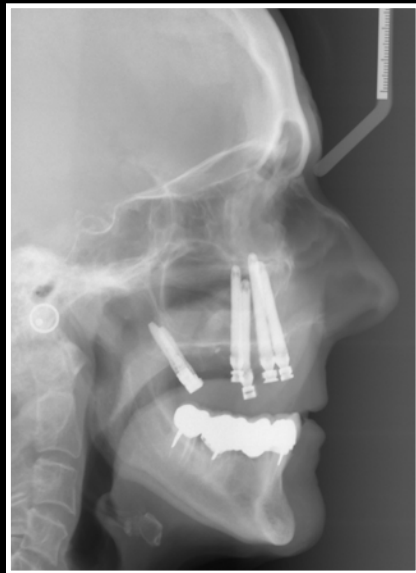
REVISION TREATMENT USING ONLY ZYGOMATIC & PTERYGOMAXILLARY IMPLANTS

4Z & 2P NBS



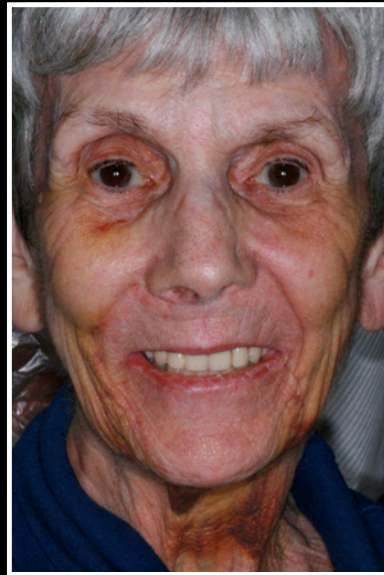
REVISION TREATMENT USING ONLY ZYGOMATIC & PTERYGOMAXILLARY IMPLANTS

4Z & 2P NBS



REVISION TREATMENT USING ONLY ZYGOMATIC & PTERYGOMAXILLARY IMPLANTS

4Z & 2P NBS



7 Days
Post Surgery

REVISION TREATMENT USING ONLY ZYGOMATIC & PTERYGOMAXILLARY IMPLANTS

4Z & 2P NBS



7 Days
Post Surgery

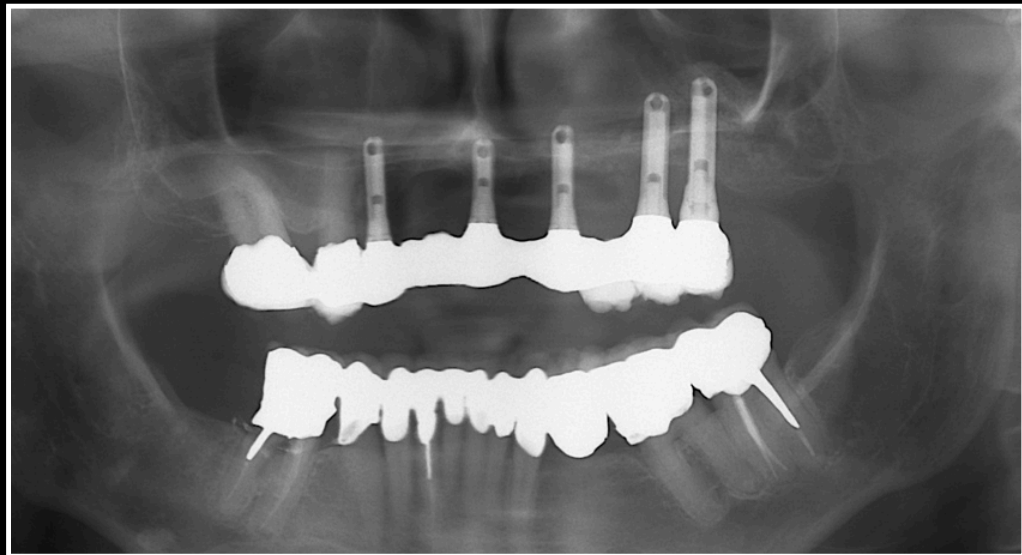


Final Prosthesis Construction

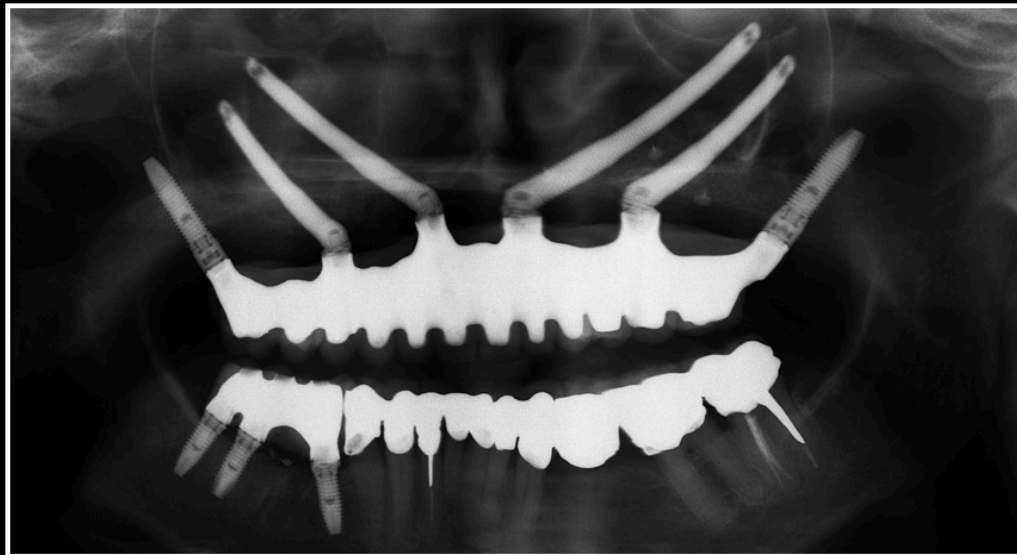
Traditional PFM
Screw-Retained
Prosthesis



Pre Treatment



Post 4-Z & 2-P NBS

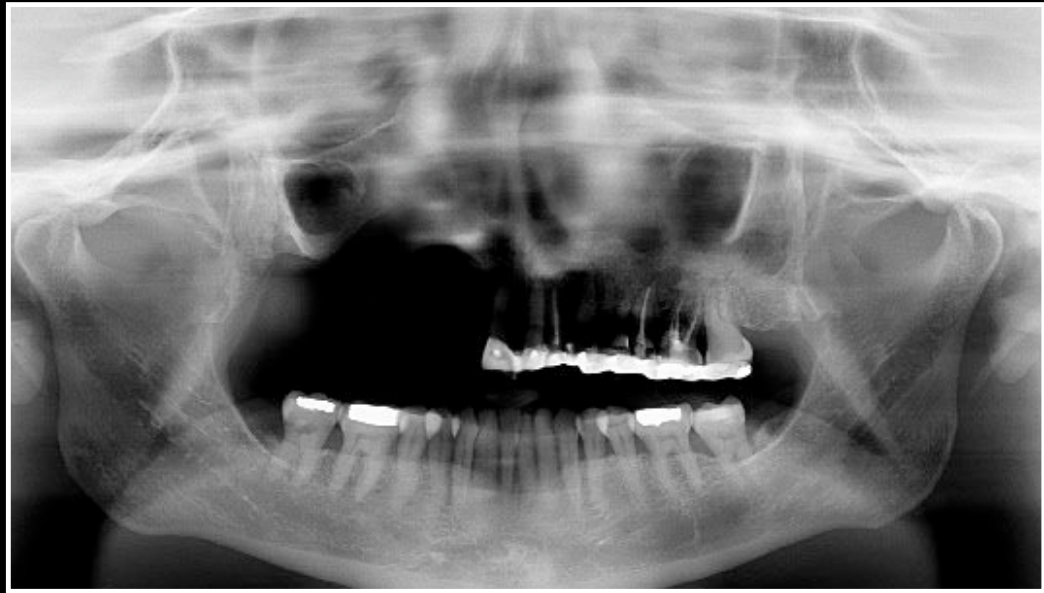


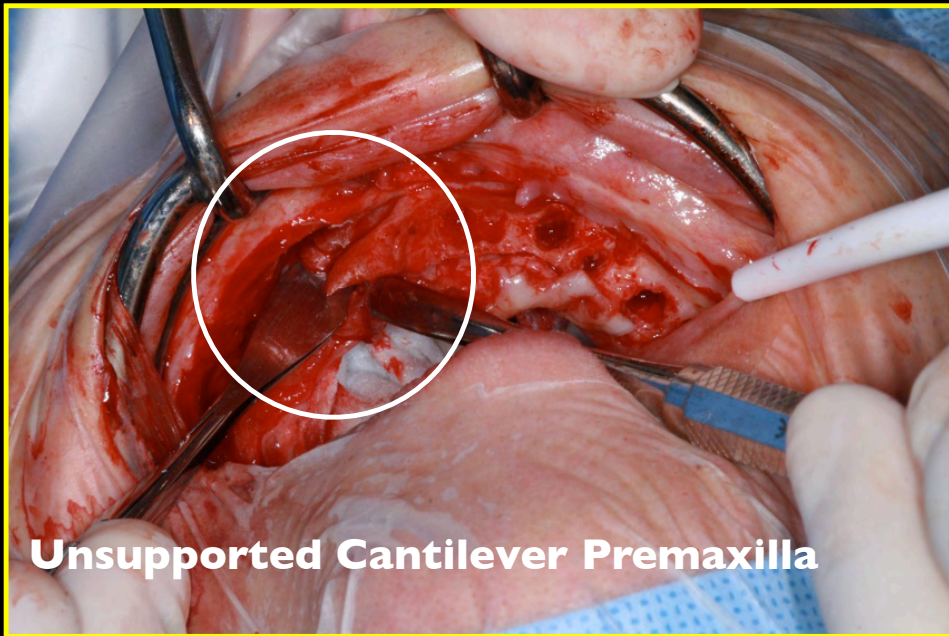


Lynne G.

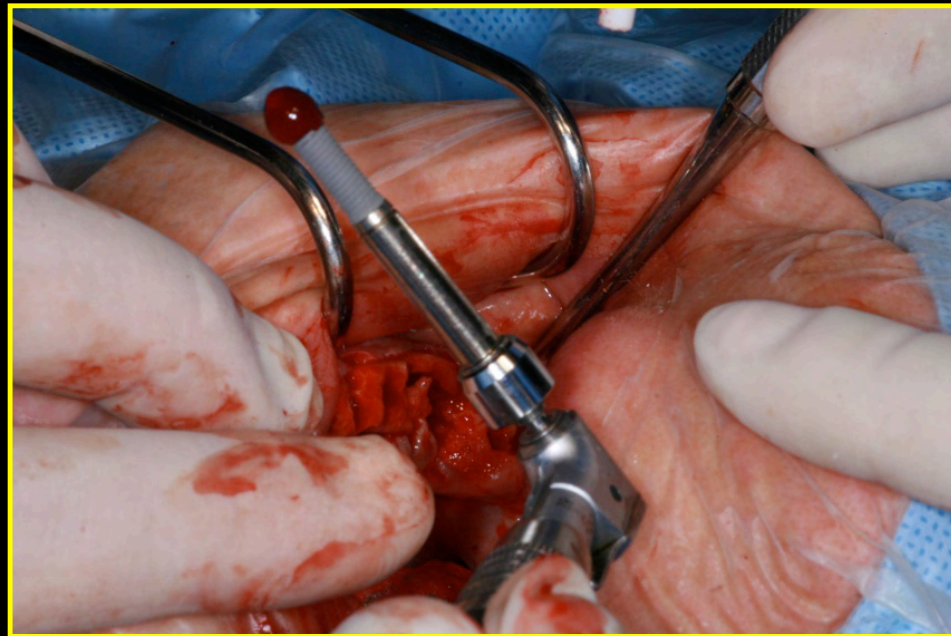




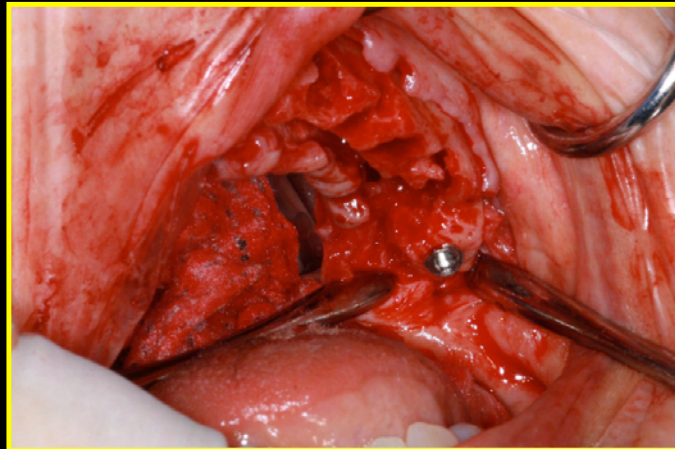
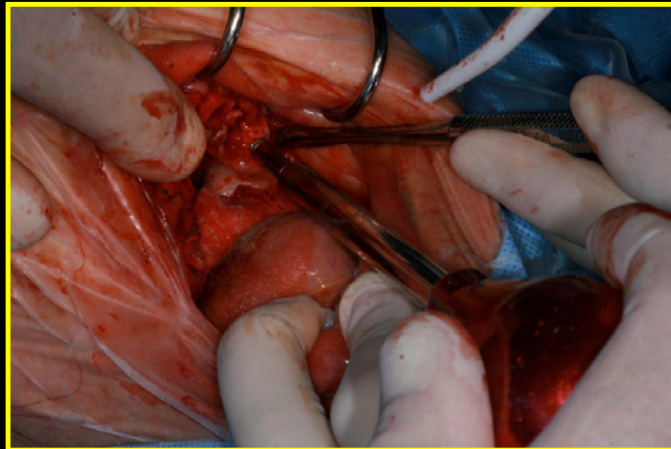
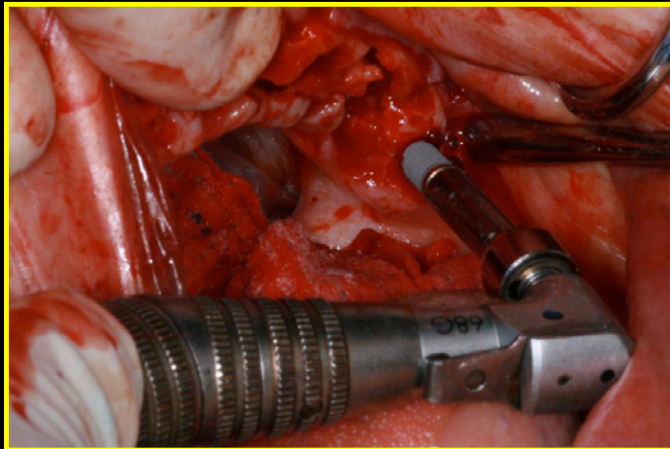


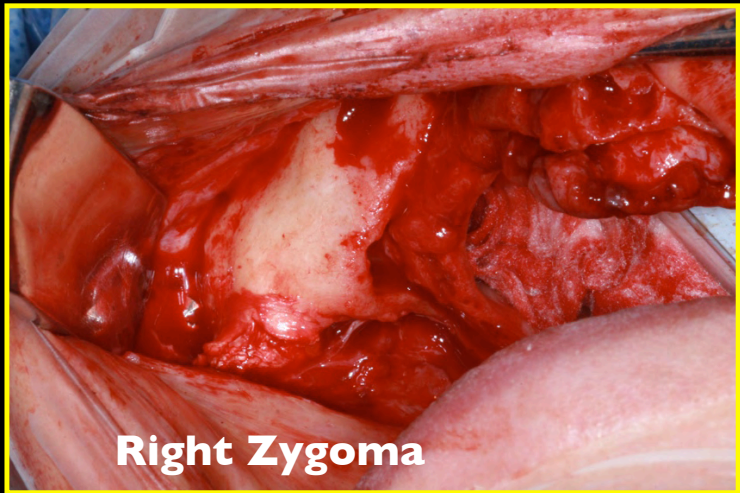


Unsupported Cantilever Premaxilla

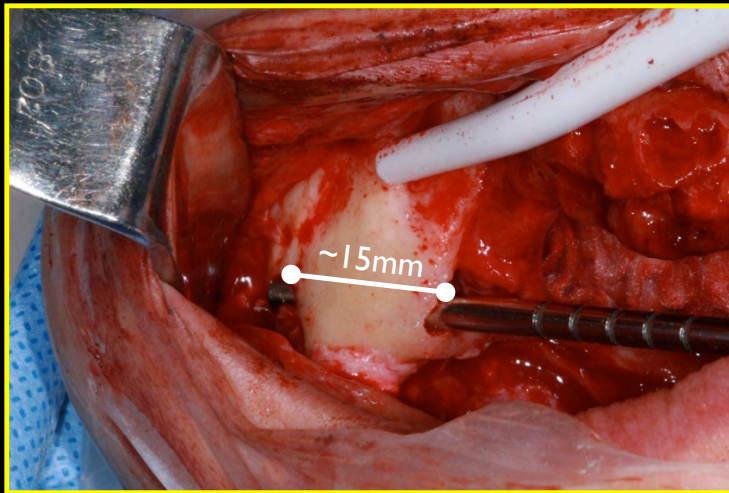


Left Pterygomaxillary Implant - 18 mm





Right Zygoma

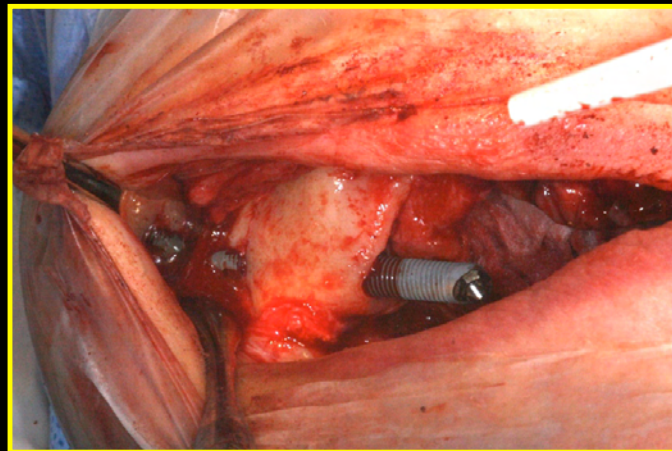
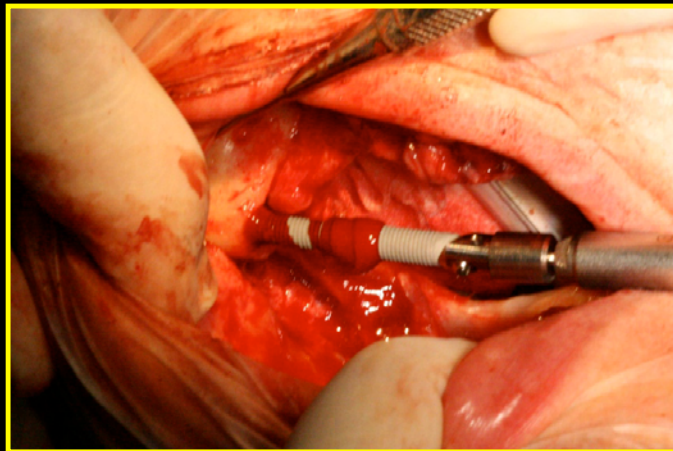
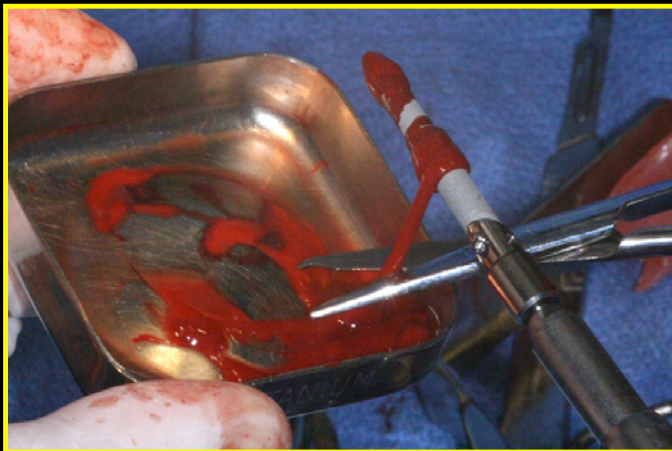


In a retrospective study on 173 implants in 77 patients, it was shown that the mean height was **15.32 mm**.



Balshi TJ, Wolfinger GJ, Shuscavage NJ, Balshi SF. Zygoma bone-to-implant contact in 77 patients with partially or completely edentulous maxillas. *J Oral Maxillofac Surg* 2012; 70(9):2065-2069.

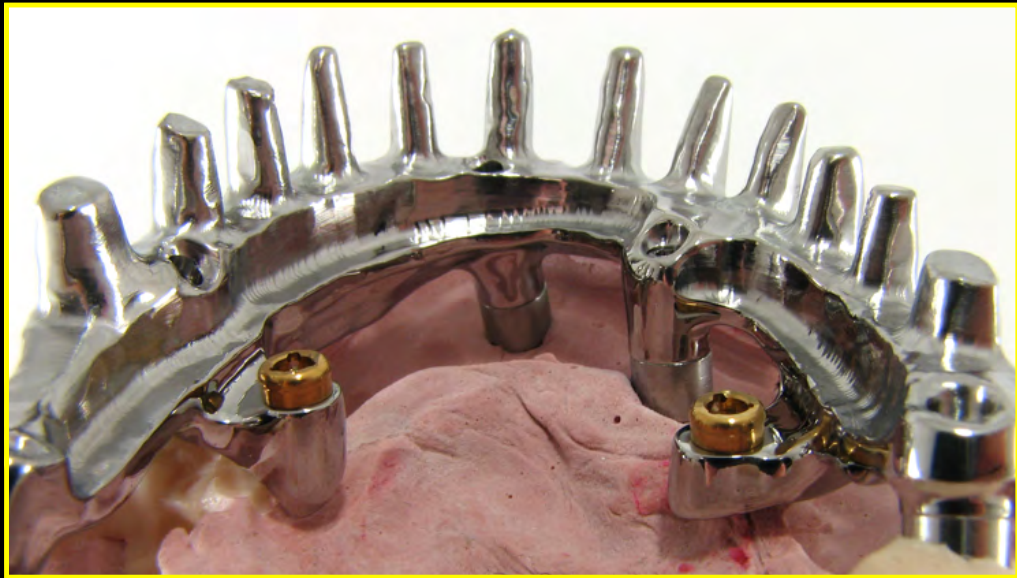
Right Zygomatic Implant - 30 mm





4 Months Post-Surgery





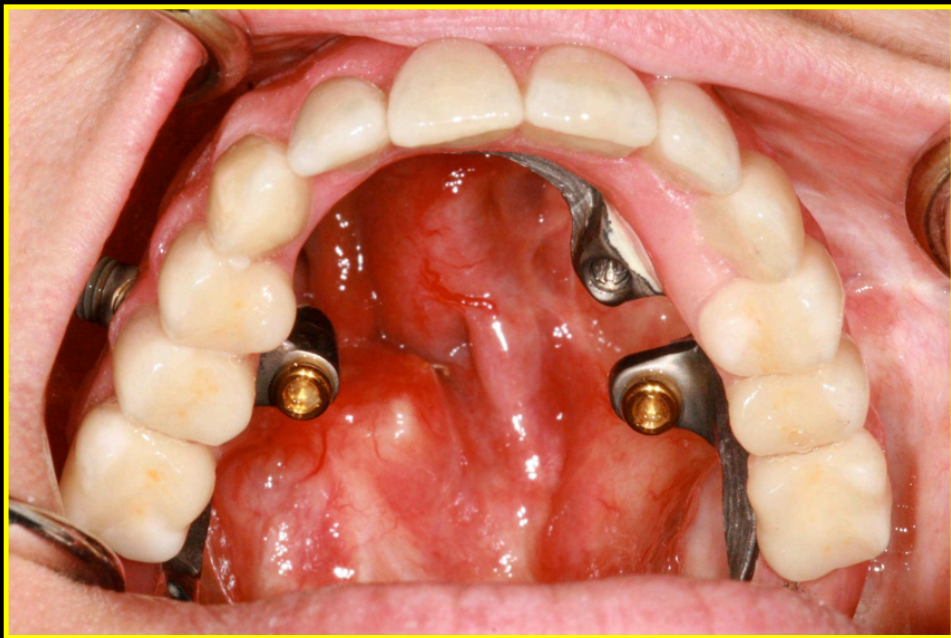


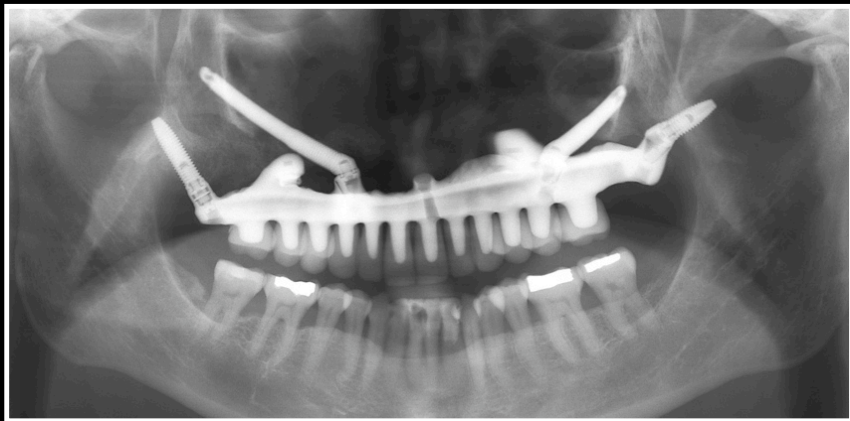




6 Months Post-Surgery









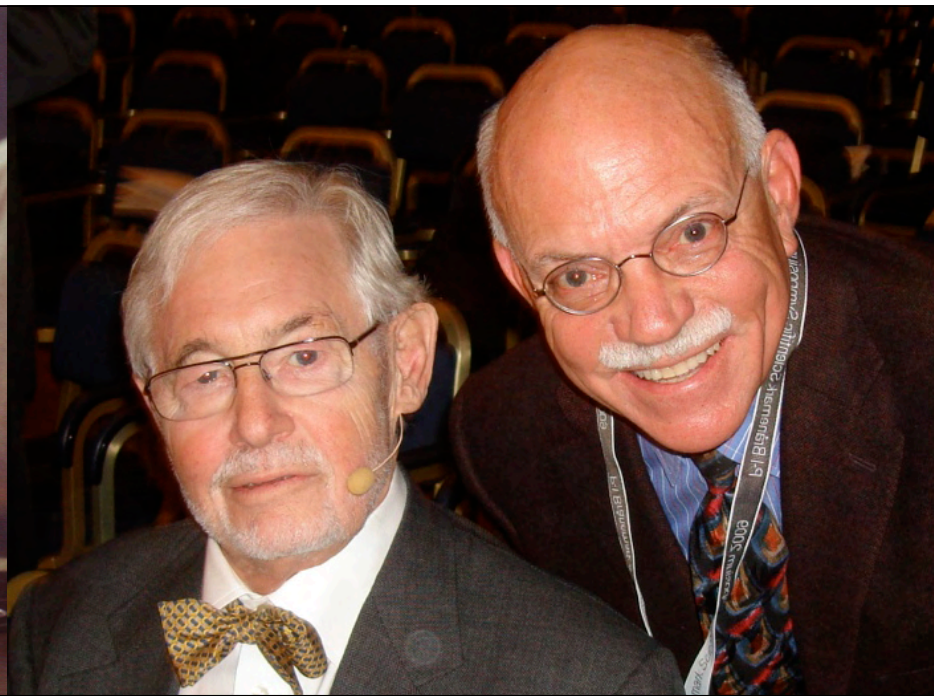
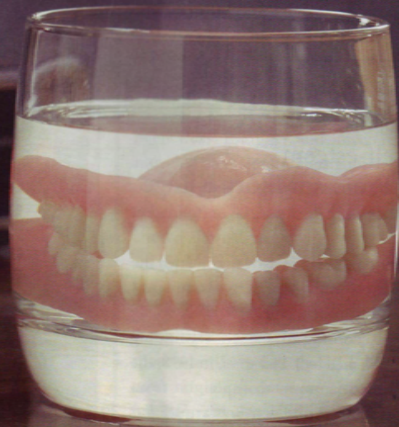


CONCLUSION

The No BoneZ Solution™ protocol,
using *pterygomaxillary* and *zygomatic* implants,
is the pinnacle of
implant prosthodontic **revision** treatment

“No one should have to die with their teeth in a glass of water beside their bed.”

Prof. Per-Ingvar Brånemark



The Institute for
Facial Esthetics
Ft. Washington,
Pennsylvania,
USA



THANK
YOU